

TRANSITION PLANNING TERMINOLOGY



ADULT CAREER AND CONTINUING EDUCATION SERVICES-VOCATIONAL REHABILITATION (ACCES-VR)- SERVICES THAT ARE OFFERED THROUGH THE NEW YORK STATE EDUCATION DEPARTMENT TO ASSIST PEOPLE WITH DISABILITIES TO ACHIEVE AND MAINTAIN EMPLOYMENT AND TO SUPPORT INDEPENDENT LIVING.



ADULT SERVICES- SERVICES NEEDED FOR PEOPLE WHEN THEY REACH ADULTHOOD; OFTEN INCLUDING, BUT NOT LIMITED TO, ASSISTANCE IN FINDING A JOB, ASSISTANCE IN THE HOME, ASSISTANCE AT WORK, EMPLOYMENT- RELATED SUPPORTS SUCH AS HOUSING AND TRANSPORTATION, AND PROVISION OF VARIOUS THERAPIES OR MEDICATIONS



Advocacy-speaking for or urging a cause, such as equal access to community services.



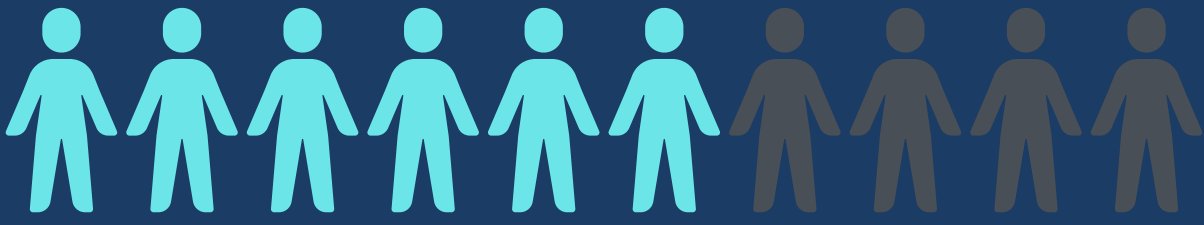
AGE-APPROPRIATE TRANSITION ASSESSMENT- ONGOING PROCESS OF COLLECTING DATA ON THE INDIVIDUAL'S NEEDS, PREFERENCES, AND INTERESTS AS THEY RELATE TO THE DEMANDS OF CURRENT AND FUTURE WORK, EDUCATION, LIVING, AND PERSONAL AND SOCIAL ENVIRONMENTS



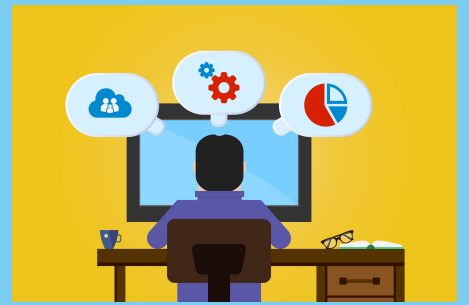
AGING OUT - A TERM THAT IS USED WHEN TALKING ABOUT A STUDENT WHO IS NEARING THE END OF HIS/HER SCHOOL CAREER. IT IS GENERALLY USED IN REGARD TO STUDENTS WHO HAVE SEVERE DISABILITIES AND WHO WILL REQUIRE PROGRAMS AND SERVICES INTO THEIR ADULT YEARS



TRANSITION PLANNING TERMINOLOGY



Assistive Technology Device-any item, piece of equipment, or product system, whether acquired commercially off-the-shelf, modified or customized, that increases, maintains, or improves functional capabilities of individuals with disabilities.



ASSISTIVE TECHNOLOGY SERVICE- AS DEFINED BY THE IDEA, ANY SERVICE THAT DIRECTLY ASSISTS A LEARNER WITH A DISABILITY IN THE SELECTION, ACQUISITION, OR USE OF AN ASSISTIVE TECHNOLOGY DEVICE.

Care Coordinator- a professional who helps kids with special needs and their families connect with the right resources and services.



Care Manager-work with individuals with I/DD and their families to develop a care plan known as a “Life Plan” that includes health and behavioral health services, community and social supports, and other services.)

CAREER/VOCATIONAL ASSESSMENT- THE SYSTEMATIC COLLECTION OF INFORMATION ABOUT THE STUDENT’S VOCATIONAL APTITUDES, ABILITIES, EXPRESSED INTERESTS, AND OCCUPATIONAL AWARENESS USED IN PLANNING A TRANSITION TO COMPETITIVE EMPLOYMENT OR POSTSECONDARY EDUCATION.



TRANSITION PLANNING TERMINOLOGY



College & Career Ready- Refers to the content knowledge, skills, and habits that students must possess to be successful in postsecondary education or training that leads to a sustaining career



Community based Instruction- Integrating students into their community as part of their education.



Community-Based Services - provided in a non-institutional setting, preferably in individual's home community.



Community Residence-A facility in the community providing room, board, and clinical supervision and homelike environment. Two examples are group homes and halfway houses.



DAY TREATMENT -A HIGHLY STRUCTURED, SCHOOL-BASED TREATMENT PROGRAM THAT PROVIDES MENTAL HEALTH AND EDUCATIONAL SERVICES TO CHILDREN IN GRADES K-8, AND THOSE OBTAINING THEIR HIGH SCHOOL EQUIVALENCY WITH SERIOUS EMOTIONAL AND BEHAVIORAL ISSUES.

TRANSITION PLANNING TERMINOLOGY



THE POST-SECONDARY STUDENT **EXIT SUMMARY REPORT** -PROVIDES THE STUDENT WITH A WRITTEN REPORT THAT CONTAINS ESSENTIAL INFORMATION TO CONSIDER AS THE STUDENT TRANSITIONS OUT OF SECONDARY SCHOOL TO ADULT LIVING, LEARNING AND WORKING. THIS REPORT IS USED EXCLUSIVELY FOR CSE STUDENTS 16 YEARS OF AGE OR OLDER.



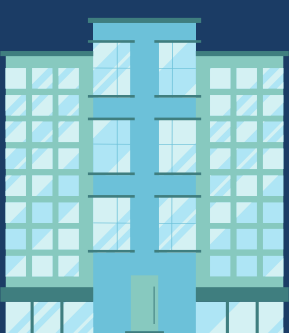
FAMILY DIRECTED PLANNING -A PLANNING PROCESS IN WHICH THE STUDENT AND THE STUDENT'S FAMILY ARE THE TEAM LEADERS.

GUARDIANSHIP - A COURT PRECEDING THAT GRANTS DECISION-MAKING AUTHORITY FOR AN ADULT WITH A SIGNIFICANT COGNITIVE DISABILITY TO A THIRD PARTY (E.G., PARENT IS GRANTED DECISION-MAKING POWER OVER THEIR CHILD'S FINANCES.



IEP TEAM-

A MULTI-DISCIPLINARY TEAM, INCLUDING THE STUDENT AND PARENTS THAT REVIEW EVALUATIONS AND RECOMMEND SPECIAL EDUCATIONAL PROGRAMS AND SERVICES FOR CHILDREN WITH DISABILITIES.

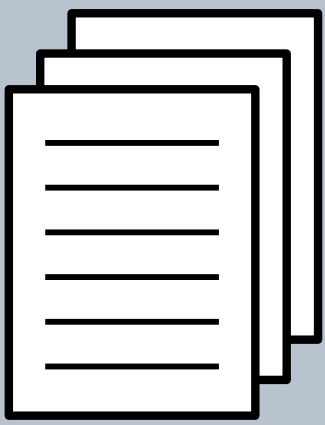


IN-HOME RESPITE / RESPITE CARE -SERVICES IN THE HOME OF THE DISABLED INDIVIDUAL TO RELIEVE THE USUAL CAREGIVER (PARENT, SPOUSE, SIBLING, ETC.) OF TIN-HOME RESPITE / RESPITE CARE SERVICES IN THE HOME OF THE DISABLED INDIVIDUAL TO RELIEVE THE USUAL CAREGIVER (PARENT, SPOUSE, SIBLING, ETC.) OF THE CARE OF THE INDIVIDUAL FOR PERIOD OF TIME.

TRANSITION PLANNING TERMINOLOGY



INDEPENDENT LIVING- LIVING IN A HOUSE OR APARTMENT ALONE OR WITH OTHERS, BUT NOT WITH A FAMILY MEMBER OR PROFESSIONAL STAFF.



INDIVIDUALIZED EDUCATION PROGRAM(IEP)- THE WRITTEN PLAN DESIGNED TO HELP DEVELOP SPECIFIC EDUCATIONAL GOALS FOR THE CHILD WITH DISABILITIES'. IT IDENTIFIES THE DISABILITY; DESCRIBES THE CHILD'S STRENGTHS AND AREAS OF NEED; LISTS GOALS THAT THE CHILD SHOULD REACH IN A YEARS TIME; INCLUDES SHORT-TERM INSTRUCTIONAL OBJECTIVES THAT REPRESENT A SERIES OF SKILLS TO MASTER OR GOALS TO ACCOMPLISH; AND, IDENTIFIES PROGRAMS AND SERVICES, INCLUDING REGULAR EDUCATION, THAT THE CHILD WILL RECEIVE. THE IEP IS REVIEWED EACH YEAR. FROM AGE 15 ON, THE IEP WILL ALSO ADDRESS TRANSITION NEEDS AND SERVICES

INDIVIDUALIZED PLAN FOR EMPLOYMENT (IPE) - ALL VOCATIONAL REHABILITATION SERVICES PROVIDED BY ACCES-VR MUST BE INCLUDED ON THE INDIVIDUALIZED PLAN FOR EMPLOYMENT (IPE) AND BE REQUIRED TO REACH YOUR EMPLOYMENT GOAL. THE IPE IS THE ROAD MAP TO EMPLOYMENT.



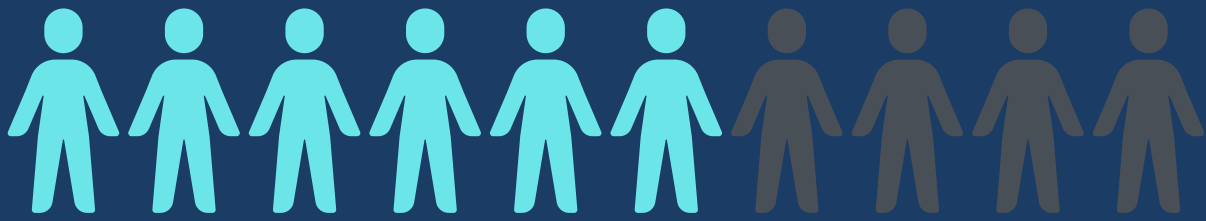
IDEA(INDIVIDUALS WITH DISABILITIES EDUCATION ACT) - A US FEDERAL STATUTE THAT GOVERNS THE EDUCATION OF STUDENTS WITH DISABILITIES AND RELATED SERVICES. IT ENSURES THAT PUBLIC SCHOOLS SERVE THE EDUCATIONAL NEEDS OF STUDENTS WITH DISABILITIES BY PROVIDING THEM WITH SPECIAL EDUCATION SERVICES. THE MAIN FOCUS IS TO GUARANTEE A FREE APPROPRIATE PUBLIC EDUCATION (FAPE) TO THESE STUDENTS. THE LAW ALSO ENSURES THAT THE UNIQUE NEEDS OF STUDENTS WITH DISABILITIES ARE MET AS THEY ARE PREPARED FOR HIGHER EDUCATION, EMPLOYMENT, AND OF COURSE INDEPENDENT LIVING.



IDT (INTENSIVE DAY TREATMENT)- AN EDUCATIONAL PROGRAM DESIGNED TO SUPPORT CHILDREN AND ADOLESCENTS WHO ARE NOT CURRENTLY DANGEROUS AND WHO ARE EXPERIENCING A CRISIS AT HOME AND / OR SCHOOL. THE PROGRAM PROVIDES SHORT-TERM, INTENSIVE INTERVENTION, TREATMENT, AND EDUCATIONAL SUPPORT. THE GOAL OF THE IDT PROGRAM IS TO RETURN THE STUDENT TO THE HOME SCHOOL WITHIN 30 DAYS



TRANSITION PLANNING TERMINOLOGY



INTENSIVE SUPPORTIVE COMMUNITY RESIDENCE -A COMMUNITY RESIDENCE PROGRAM FOR PERSONS RECOVERING FROM MENTAL ILLNESS THAT PROVIDES SUPPORT THROUGH DAILY STAFF VISITS. SKILLS TO BE LEARNED INCLUDE MEAL PREPARATION, SHOPPING, LAUNDRY, AND CLEANING.



JOB COACH- A PERSON WHO PROVIDES ASSISTANCE TO AN INDIVIDUAL WITH A DISABILITY TO LEARN OR MAINTAIN A JOB. THIS CAN INCLUDE TRAINING AND SUPPORT AT THE JOB SITE. SEE SUPPORTED EMPLOYMENT

MEDICAL WAIVER: FOR PEOPLE WITH SPECIAL NEEDS, A REQUEST FROM THEIR STATE TO THE FEDERAL GOVERNMENT TO REMOVE RESTRICTIONS ON THE WAY MEDICAID MONEY IS SPENT.



MULTI-DISCIPLINARY TEAM - A GROUP OF PROFESSIONAL AND NON-PROFESSIONAL STAFF, SUCH AS TEACHERS, NURSES, SOCIAL WORKERS, DOCTORS, SPEECH THERAPIST, PHYSICAL THERAPISTS, ETC. THIS TEAM USUALLY INCLUDES FAMILY MEMBERS AND THE STUDENT IN THE PLANNING AND DECISION MAKING PROCESS.

MULTIPLE DISABILITIES- STUDENTS WHO HAVE TWO OR MORE DISABILITIES THAT RESULT IN MULTIPLE SENSORY OR MOTOR DEFICIENCIES AND DEVELOPMENTAL LAGS IN THE COGNITIVE, AFFECTIVE, OR CYCLE MOTOR AREAS.



TRANSITION PLANNING TERMINOLOGY



Residential Care/Treatment Programs- providing therapeutic living environments in community-based facilities such as community residences



RESPITE-TO TAKE A BREAK FROM THE DAILY CHALLENGES OF CARING FOR A CHILD OR A PARENT WITH SPECIAL NEEDS. IT CAN BE PLANNED FOR A FEW HOURS OR FOR AS LONG AS A WEEKEND. RESPITE CAN TAKE PLACE IN YOUR HOME OR TEMPORARILY IN ANOTHER SETTING, SUCH AS A DAY CENTER OR IN THE COMMUNITY. RESPITE CAN TAKE PLACE REGULARLY OR INTERMITTENTLY, AS YOU NEED IT; HOWEVER, IT DOES NEED TO BE PLANNED IN ADVANCE.



Self-Help - Assisting oneself. Refers also to groups who meet to help one another.

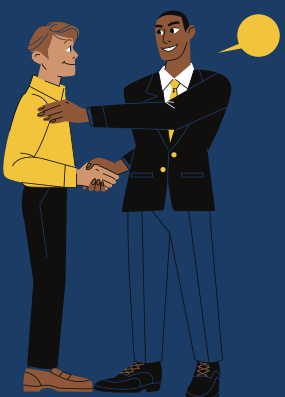


SELF-DETERMINATION-A PROCESS IN WHICH THE INDIVIDUAL'S PREFERENCES, INTEREST, ABILITIES, AND WISHES ARE THE FOCUS OF PLANNING AND IMPLEMENTING ACTIVITIES

s.



SERVICE COORDINATOR- AN ADVOCATE CHOSEN BY THE CONSUMER TO ASSIST IN ASSESSING HEALTH AND SOCIAL SERVICE SYSTEMS AND TO ASSURE THAT ALL REQUIRED SERVICES ARE OBTAINED



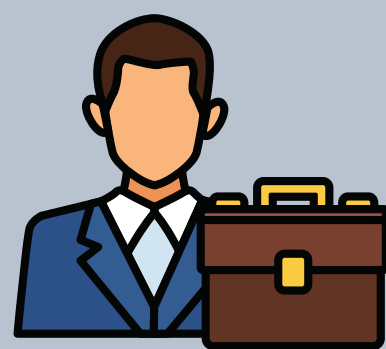
TRANSITION PLANNING TERMINOLOGY



SOCIAL SECURITY DISABILITY INCOME (SSDI)- PROVIDES BENEFITS TO WORKERS OR CERTAIN MEMBERS OF A WORKER'S FAMILY WHO MAY QUALIFY, BASED ON IMPAIRMENT SEVERE ENOUGH TO PREVENT WORKING FOR A YEAR OR MORE, OR WHICH IS EXPECTED TO RESULT IN DEATH. THE DEFINITION REQUIRES TOTAL DISABILITY. BENEFITS WILL CONTINUE AS LONG AS THE PERSON IS MEDICALLY DISABLED AND NOT ENGAGED IN SUBSTANTIAL GAINFUL EMPLOYMENT

SUPPLEMENTAL SECURITY INCOME (SSI)- BASIC MONTHLY FINANCIAL ASSISTANCE FOR PEOPLE WITH DISABILITIES WHO ARE NOT GAINFULLY EMPLOYED AND FOR THE ELDERLY

SUPPORTED EMPLOYMENT- A PROGRAM FOR PERSONS WITH SUBSTANTIAL DISABILITIES DESIGNED TO ASSIST INTEGRATION INTO COMPETITIVE EMPLOYMENT.



THE AMERICANS WITH DISABILITIES ACT (ADA)- BECAME LAW IN 1990. THE ADA IS A CIVIL RIGHTS LAW THAT PROHIBITS DISCRIMINATION AGAINST INDIVIDUALS WITH DISABILITIES IN ALL AREAS OF PUBLIC LIFE, INCLUDING JOBS, SCHOOLS, TRANSPORTATION, AND ALL PUBLIC AND PRIVATE PLACES THAT ARE OPEN TO THE GENERAL PUBLIC. THE PURPOSE OF THE LAW IS TO MAKE SURE THAT PEOPLE WITH DISABILITIES HAVE THE SAME RIGHTS AND OPPORTUNITIES AS EVERYONE ELSE.



THE OFFICE FOR PEOPLE WITH DEVELOPMENTAL DISABILITIES (OPWDD) IS A STATE AGENCY THAT PROVIDES SERVICES TO PEOPLE OF ALL AGES WITH INTELLECTUAL AND DEVELOPMENTAL DISABILITIES



TRANSITION SERVICES- A COORDINATED SET OF ACTIVITIES FOR STUDENTS AS PART OF THE IEP, DESIGNED TO PROMOTE MOVEMENT FROM SCHOOL TO POST-SCHOOL ACTIVITIES, INCLUDING POSTSECONDARY EDUCATION, VOCATIONAL TRAINING, INTEGRATED EMPLOYMENT (INCLUDING SUPPORTED EMPLOYMENT), CONTINUING AND ADULT EDUCATION, RELATED SERVICES, INDEPENDENT LIVING, OR COMMUNITY PARTICIPATION. TRANSITION PLANNING BECOMES A PART OF THE IEP PROCESS FOR STUDENTS BEGINNING AT AGE 16 AND OLDER.

